

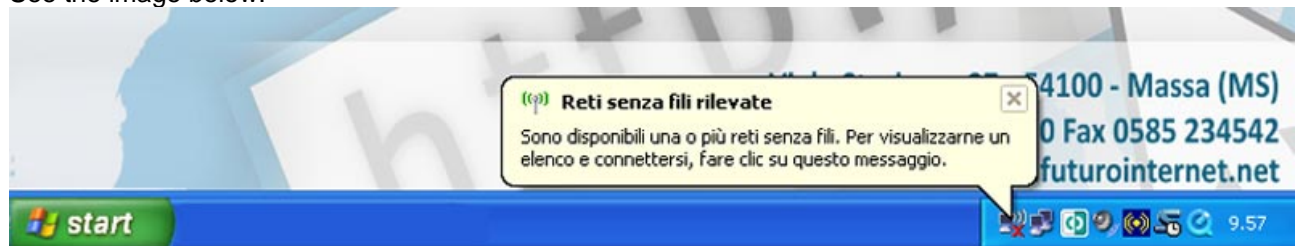
How to connect to a Wi-Fi hot spot

In this document you will find how to connect, via Wi-Fi, a pc with Windows XP and wireless connectivity with the IEEE 802.11b o 802.11g standard

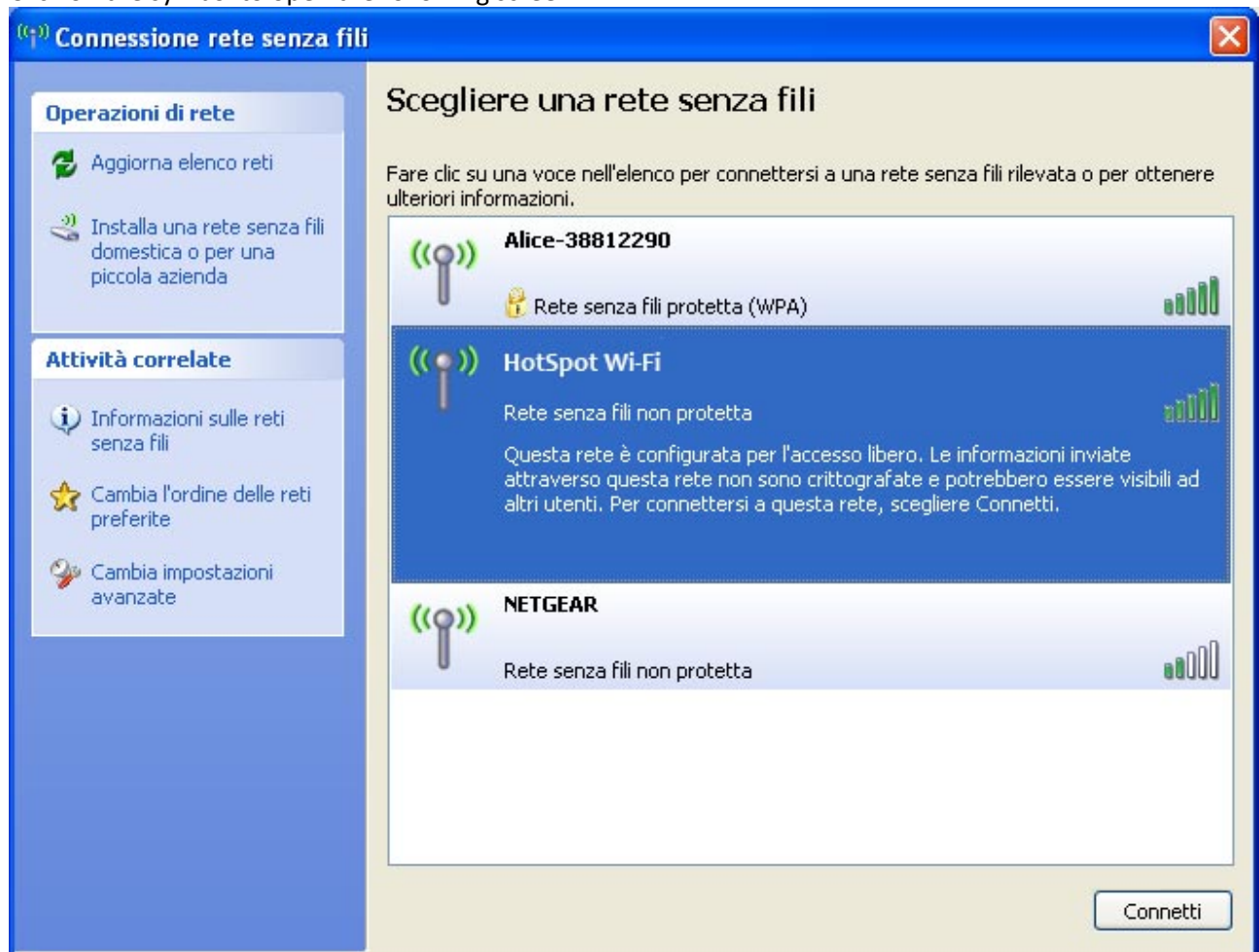
Some laptop needs extra configuration for the wireless networking. I.e. : to push a button to activate the Wi-Fi network , to prevent that the battery quickly runs down. Check out your laptop instruction for use for a correct wireless networking activation.

Once you verified that your laptop has a Wireless card and that is activated, proceed as said next.

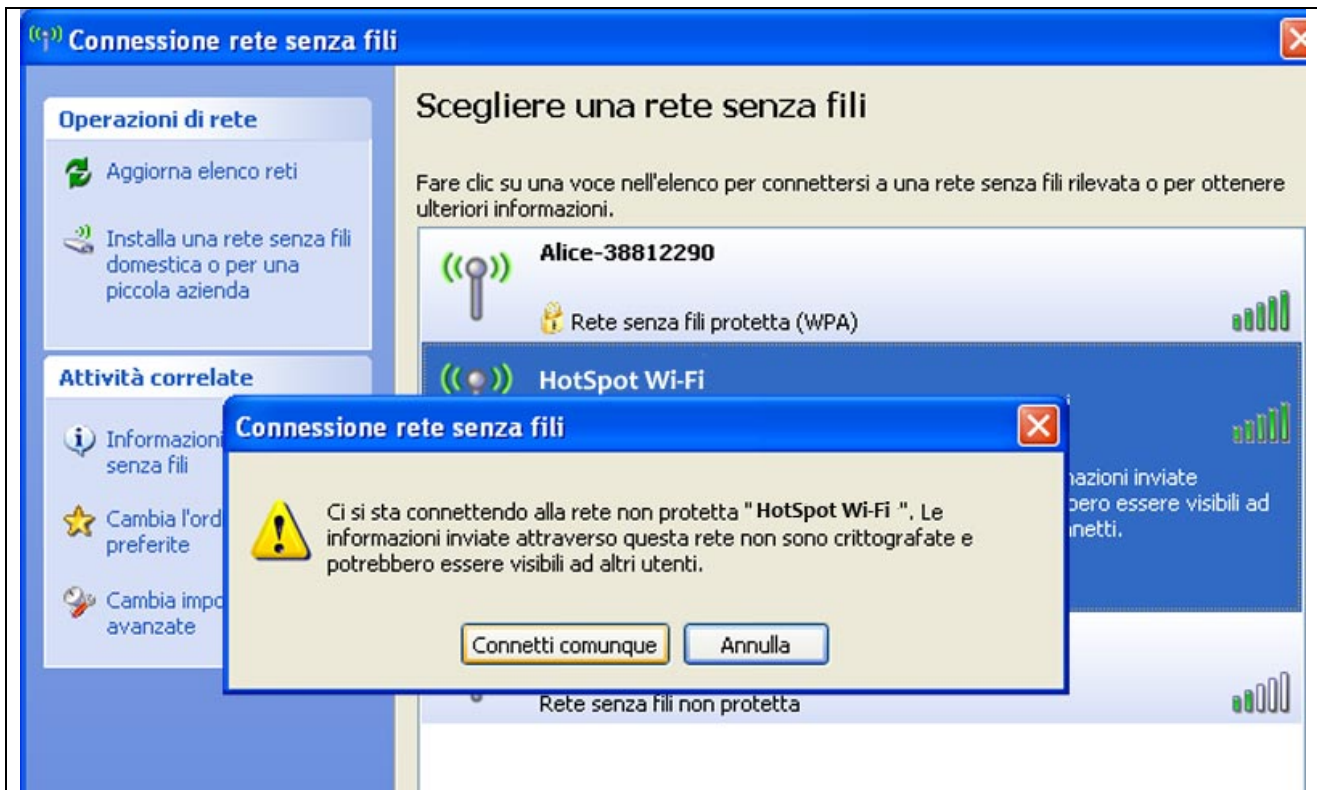
As often as not, in the right bottom corner is shown a little computer, meaning that there is a Wi-Fi network. See the image below.



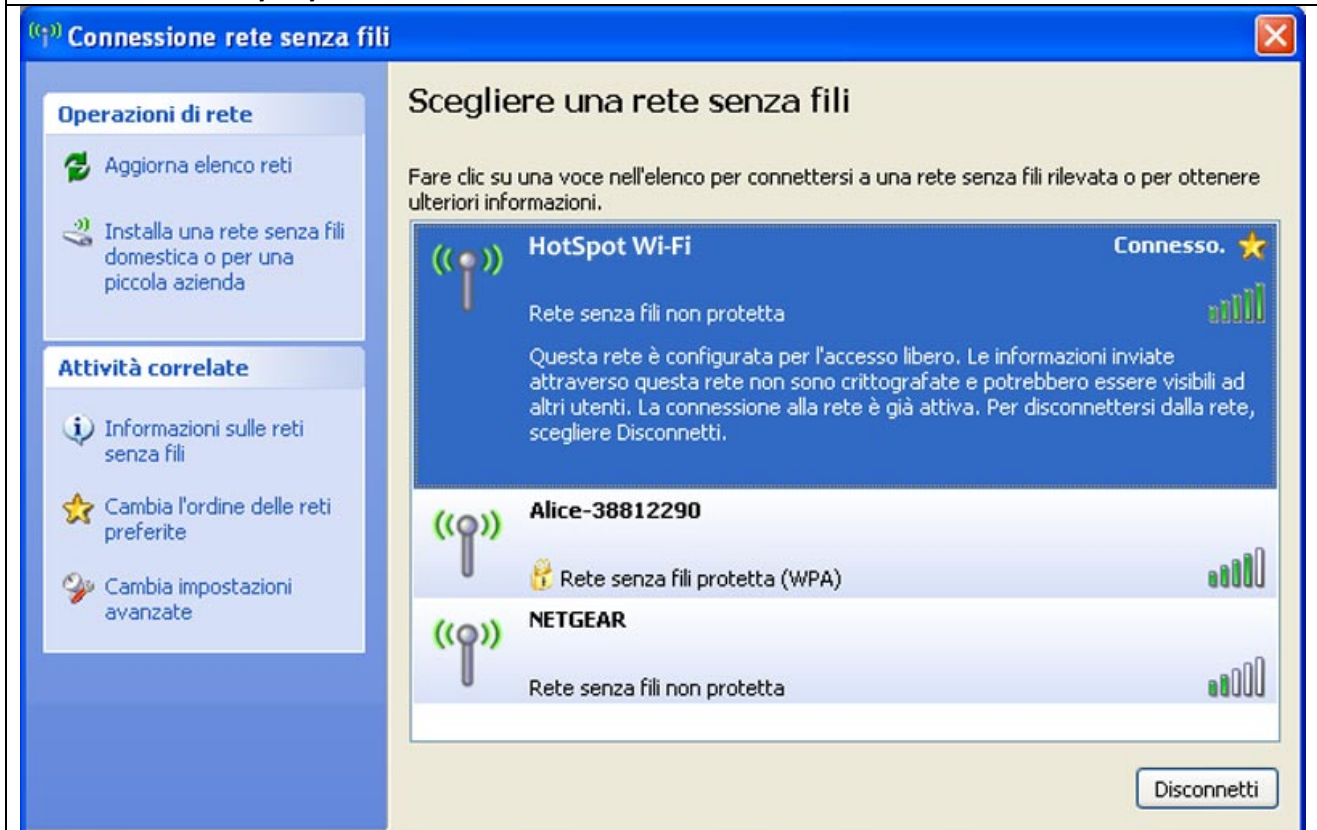
Click on the symbol to open the following screen.



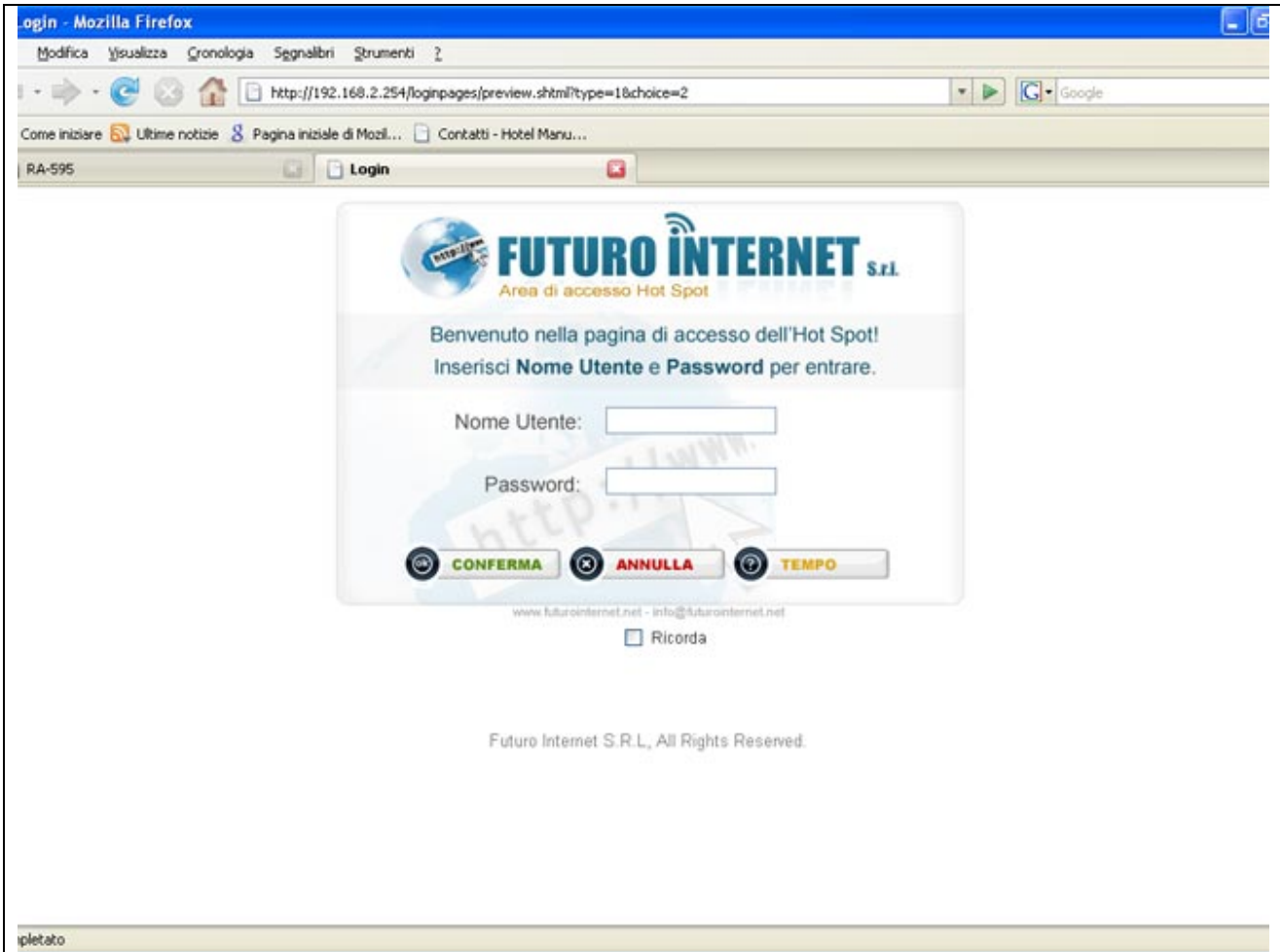
Highlight the Hot Spot network you wish to connect to (you will find the name of it in the receipt within the username and password given to you) and **click** on **Connect**.



Click on **Connect anyway** to confirm



Now you are connected to the Hot Spot but **ATTENTION!** You are not connected to the Internet yet. In order to use Internet you need to open your browser (Internet Explorer, Firefox, Opera, etc) and you will see a screen like this:



Here you need to write down the **Username** and **Password** written in the receipt. **Attention!** The system is sensitive to capitals/lower-case letters, therefore write exactly what is written in the receipt. **Click on confirm.**

If no problem occurs, you are, Finally, connected to the internet.

A little popup window will be shown (or a description file) with every data and networking timing. In order to exit (and stop the time at your disposal) click on the **exit button**. If, for any reason, the PopUp window is not available to exit and stop the time, **type** in the URL bar **logout** and confirm the intention to disconnect, if asked.

